

# Reach for the Sky





Reaching for the sky is a belief, it's an attitude. It's the driving force behind your ambition that takes you places. And on one fine day as you look back, you realize you never compromised on quality, comfort, and above all a lifestyle. At Beacon Sky, you can make it your dream to dream big. Set sky high goals for yourself. Goals that will give your loved ones the very best in life.

new heights  
in lifestyle



Reach for  
the good life

Welcome to an apartment complex that will cover all your needs in a modest budget. At the peak of indulgent living, this residential complex has 55 apartments of 2 and 3 bedroom spread across ten floors. The complex covers a total area of 80,000 sq. ft. with landscaped gardens and children's play area. There are 6 types of apartments ranging from 1164 sq. ft. to 1655 sq. ft., fitted with immaculate fixtures and fittings. Additionally, the project comes from a builder who is ISO 9001: 2008 certified.



Based in the lush green city of Trivandrum, Beacon Projects is a familiar name in the realty market. With more than 30 years of business expertise in the construction industry, our firm has been helping thousands of people unfold their dreams of building beautiful villas and elegant condominiums. We abide by our philosophy of green and grand living spaces. And have an excellent team of engineers and architects who are ever committed to delivering your aspirations.

into a  
relationship



With an apartment complex that delights you with a host of recreational activities, we make sure your life is kept at its healthy best.

- Health club • Children's play area
- Landscaped gardens
- Ground floor & First floor car park
- Driver's room and toilet • Generator back-up
- Waste management facility

Reason for  
keeping fit



Live in a serene setting at Anayara between Pettah and Venpalavattom. Located within close proximity to Technopark and the Airport, this complex makes life easier for all professionals and homemakers. All the prime facilities like shopping areas, hospitals, schools, etc. are also close by. And thus this project truly reaches for the sky in all its offerings.

#### Distances from locations

Kims hospital - 1 km • Pettah Railway Station - 3 km • Secretariat - 4.5 km  
 Airport - 4.5 km • Technopark - 9.5 km • Kendriya Vidyalaya - 750 mts  
 Arya Central school - 4 km • MGM School - 4 km • NH Bypass - 1 km • Lords Hospital - 600 mts

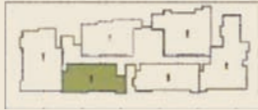


TYPE - A, AREA 1619 sq. ft.



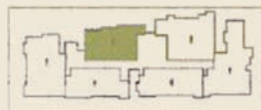
furniture and fixtures are indicative only, slight variations may occur in area/dimensions, all dimensions are in centimeters.

TYPE - B, AREA 1164 sq. ft.

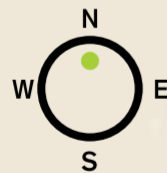


furniture and fixtures are indicative only, slight variations may occur in area/dimensions, all dimensions are in centimeters.

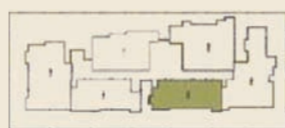
TYPE - C, AREA 1263 sq. ft.



furniture and fixtures are indicative only, slight variations may occur in area/dimensions, all dimensions are in centimeters.



TYPE - D, AREA 1193 sq. ft.



furniture and fixtures are indicative only, slight variations may occur in area/dimensions, all dimensions are in centimeters.



TYPE - E, AREA 1592 sq. ft.



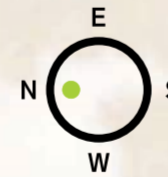
furniture and fixtures are indicative only, slight variations may occur in area/dimensions, all dimensions are in centimeters.





TYPE - F, AREA 1655 sq. ft.



furniture and fixtures are indicative only, slight variations may occur in area/dimensions, all dimensions are in centimeters.



Building specifications

	Foundation & Structure	- Earthquake resistant R.C.C. framed structure.
	Flooring	- Vitrified tiles of size 60 cms X 60 cms for the entire apartment.
	Doors and Windows	- Teak wood entrance door. Attractive factory-made internal doors. Powder coated aluminium sliding windows with glazed shutters.
	Kitchen	- Kitchen counter with granite top and single bowl with drain board stainless steel sink. Glazed tiles above the counter to a height of 45 cms.
	Toilet	- Flooring and dadoing up to lintel level with glazed tiles. Concealed piping with white sanitary fixtures and CP fittings. Hot and cold mix tap with shower. Geyser point in all bedroom toilets.
	Painting	- Acrylic distemper with putty finish for inside walls. Melamine finish for front door. Enamel paint for other doors.
	Electrical	- Concealed conduit wiring with PVC insulated copper cables for light, fan, and plug points. AC point in all bedrooms, etc. controlled by ELCB and MCB with independent KSEB metres.
	Telephone and TV	- Concealed conduits for telephone and cable TV in drawing room and master bedroom.
	Lift	- Two lifts stopping at all residential and parking floors.
	Generator	- Generator back-up for lift, common lights, water pumps, etc. 5 points for each apartment.
	Security	- 24-hour-security arrangements.
	Water Supply	- Round-the-clock water supply through sump and overhead tank.
	Firefighting	- Modern firefighting arrangements.
	Water Proofing	- Guaranteed leak-proof fibre glass lining for all toilets.

Amenities

Air-conditioned suite room • Fitness centre • Spacious lobby • Children's play area • Cable/Internet connectivity • Generator back-up for selected point • Proximity entry system (biometric) • Multi-purpose hall with banquette facility • Reticulated gas supply• Table tennis • Landscaped common area • Driver's dormitory

Terms and conditions

Terms and Conditions

Once allotted and agreement signed, the prices are firm. All payments are to be made only by Demand Draft or by local cheques favouring Beacon Projects Pvt. Ltd., payable at Trivandrum. Possession shall be given to the customer on setting of all the dues to the company. Beacon Projects Pvt. Ltd. reserves the right to accept or reject any application. Statutory Deposits, part of transformer cost/cable, Building Tax, Construction Workers Welfare Fund, VAT and Service Tax to be paid by the buyer.

Payment Schedule

25% of the total contracted amount to be paid on signing of the agreement and balance in instalments as in agreement vide post dated cheques or in a mutually agreed basis as provided in the agreement.

Maintenance

Owners' Association/Trust will be formed on handing over the possession of the apartments. Membership in the above Association/ Trust is compulsory, not optional. The Owners' Association/Trust will carry out all necessary routine and annual maintenance and repairs of common area and exterior wall of the building, common installation and fittings and payment of electrical and water charges for common facilities and services. Maintenance charges/deposits are to be paid by each owner regularly and on time. The maintenance will be carried out by the builder till the formation of the Owners' Association, which will take over the maintenance. Maintenance deposit/advance is collected from all the owners by the builder and after appropriating the expenses incurred by the builder during the period the maintenance done by them, the builder shall transfer the balance amount to the Association.

Documentation

As per government norms.

\*All disputes are subject to Trivandrum jurisdiction only.

*The good life is here*

PROJECTS DELIVERED



BEACON  
**green leaves**  
APARTMENTS  
KANJIRAMPARA



BEACON  
**green heights**  
apartments  
MEDICAL COLLEGE



BEACON  
**green lillies**  
apartments  
VETTAMUKKU  
NEAR POOJAPURA



BEACON  
**Green Grace**  
luxury apartments  
ALATHARA, NEAR TECHNOPARK



BEACON  
**green myst**  
Luxury apartments  
POOJAPURA



BEACON  
**green square**  
LUXURY APARTMENTS  
ESWARAVILASAM ROAD  
VAZHUTHACAUD

ONGOING PROJECTS



BEACON  
**colors**  
Mannanthala



BEACON  
**terrace**  
Mannanthala